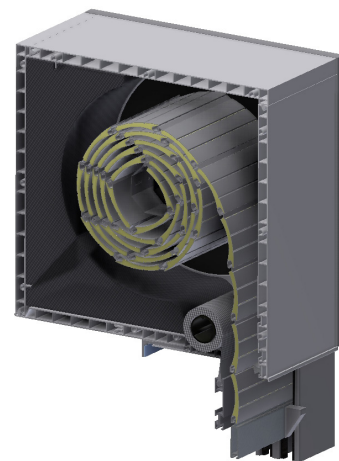
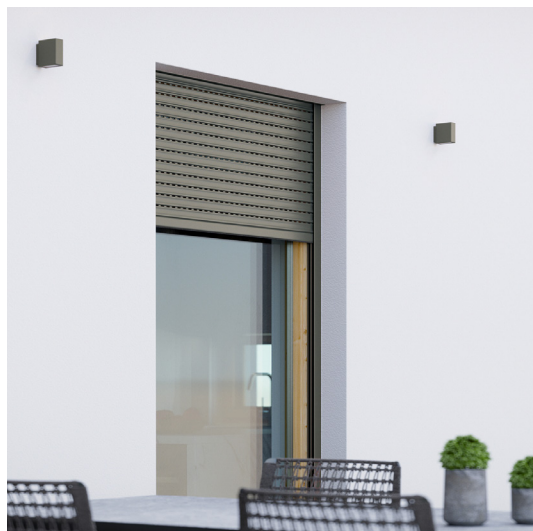


Built-in roller shutter INLINE 225



- **HEAT PROTECTION**
- **ANTI-THEFT PROTECTION**
- **LIGHT REGULATION**
- **DIMMING**
- **UV PROTECTION**
- **HEATING / COOLING SAVINGS**

New sistem completely developed in our company - Roletarstvo Medle d.o.o. is the above window roller shutter INLINE 225 - dimensions: 225x230mm. It is distinguished by particularly attractive design, the possibility of protection against insects, possibility of visible or invisible (concealed) installation, excellent insulation, stronger construction and simple - economical installation with additional sealing between the window and the cabinet. Suitable for installation on all types of window frames depth up to 94mm.

SLATS | Color palette:

WARNING: Certain colours on the chart may vary from original!

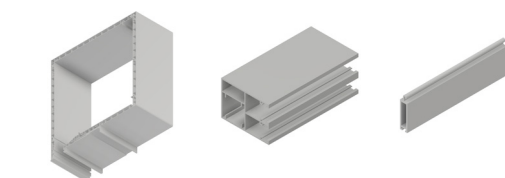
	PC1	01 WHITE	02 D. CHOCO	03 SILVER	05 L. CHOCO	PC2	04 BEIGE	08 GREEN	10 L. GREY	11 ANTRICIO GRISO	13 GRAPHITE	PC3	06 ASH	07 WALNUT	16 GOLDEN OAK
		12 ANTHRACITE	14 RAL 9007	52 DB 703		15 OCHRE	18 RAL 8017						17 WALNUT GEA		

	PC1	01 WHITE	02 D. CHOCO	03 SILVER	04 BEIGE		PC1	01 WHITE	03 SILVER
		11 ANTRICIO GRISO	12 ANTHRACITE	14 GREY	52 DB 703			12 ANTHRACITE	52 DB 703

* colors 02, 04, 11, 14 available for orders over 50m²

ALU slats are filled with insulation - polyurethane foam, standard fitted with anti-theft springs. Machine slat binding ensures a quieter and more reliable operation.

CABINET, GUIDERAILS, END SLAT | Color palette:



CABINET: Only in white.

PC1	013 WHITE	010 RAL 9006	090 RAL 9007	
	042 RAL 7016	066 RAL 8012	052 DB 703	

WARNING: Certain colours on the chart may vary from original!

MANIPULATION:

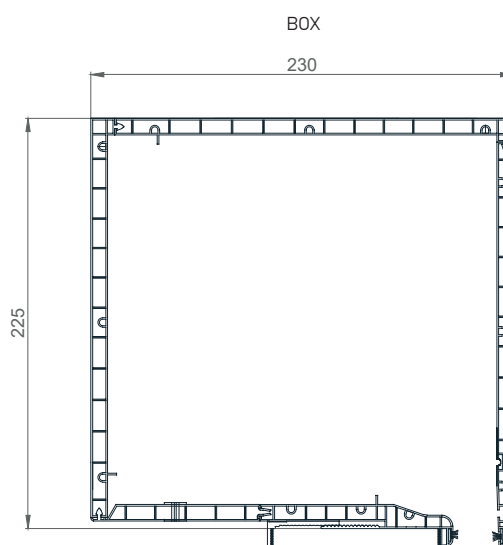


Manipulation is possible with automaton or electrical motor. For motor operation there is the standard PLUG & PLAY function, which allows the connection of several motors to a single switch, self-adjusting positions and the safety function in the event of an obstacle.



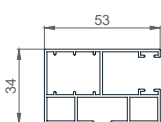


This technical drawing illustrates a window assembly. The top portion shows a cross-section of the window frame and its integration with the building's structure, including insulation and glazing. Below this, a detailed view of the handle mechanism is shown, featuring a lever handle and a complex internal linkage system that operates the window's opening and closing.

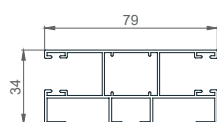


DIM. 230 X 225

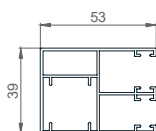
ALU



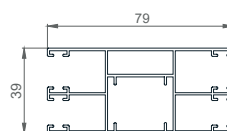
53 X 34mm



79 X 34mm

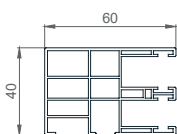


53 X 39mm

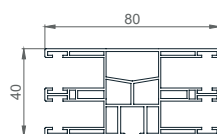


79 X 39mm

PVC

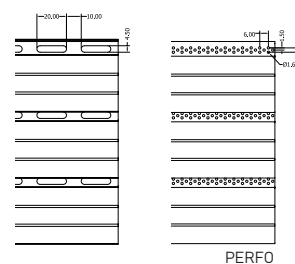


60 X 40mm

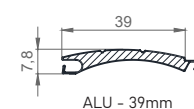


80 X 40mm

FALCON - 39mm



PERFO



ALU - 39mm